

대한심장학회 제65차 추계학술대회

The 65th Annual Scientific Meeting of The Korean Society of Cardiology



The 65th Annual Scientific Meeting of The Korean Society of Cardiology



Diamond Sponsors



Bristol Myers Squibb
Pfizer



VIATRIS

2021. 10. 16^{Sat.} - 18^{Mon.}
Virtual Conference



WEBINAR

Sponsors

Diamond



Platinum



Gold



Silver



Bronze



HIGHLIGHT PROGRAM

Oct 17 (Sun.) 14:30 - 16:00

Channel 3

Basic Hot Session 1

Oct 17 (Sun.) 16:10 - 17:40

Channel 3

Basic Hot Session 2

Oct 18 (Mon.) 08:30 - 10:00

Channel 3

Update of Latest Clinical Trial

What's New? Update of Key Clinical Trials 2021

Oct 18 (Mon.) 10:10 - 11:40

Channel 3

Guideline Review

How to Apply Guideline in My Practice

16
SAT.

1

DAY 1 Program at a glance

A Abstract Presentation **Eng** English Session

	Channel 1	Channel 2	Channel 3	Channel 4	Channel 5	Channel 6	Abstract Library
09:00 - 10:30	Featured Education Session 1. Instruction of Clinical Research Instruction of Clinical Research for Research Beginners	Intervention 1 Tough Calls during PCI	Eng 08:50 - 10:00 APSACHD 1 Heart Failure in ACHD	Eng A Young Investigator award Competition 1 1-6	Eng A Young Investigator award Competition 2 7-12	전공의 Awards Oral 1-9	
			Eng 10:10 - 11:10 APSACHD 2 Valvular Problem in ACHD				
10:40 - 12:10	Featured Education Session 2. ECG Case Series ECG Case Series	Intervention 2 Master, Please Let Me Know How to Apply Imaging & Physiology in My Practice	Eng 11:20 - 12:20 APSACHD 3 My Tips for ACHD with Heart Failure	Eng A Young Investigator award Competition 3 13-18	Eng A Young Investigator award Competition 4 19-24	전공의 Awards Case 10-16	
12:20 - 13:00	Diamond Session [BMS/Pfizer] Latest Insights of Anticoagulation Management	Diamond Session [Viatris] Unchangeable 1st Option of Lipid Management	Scientific Session [Amgen] Lipid Management After ACS: The Role of PCSK9 Inhibition	Scientific Session [Organon] Early & Lower for Longer: Prevention of Cardiovascular Disease	Scientific Session [Hanmi] Strategies for Cardiovascular Disease Prevention in Hypertension and Dyslipidemia	Eng Case 1 (Arrhythmia) 1-4	Abstract 1-270
13:00 - 13:20	Break						
13:20 - 14:50	Imaging Imaging for Arrhythmia and Vasculatures	Cross Specialty: Heart Failure & Arrhythmia Cross Specialty Debate: Hot Issues in HF & EP	Eng 13:30-14:30 APSACHD 4 Heart Failure & Rhythm Problem in ACHD	Eng A **JCS-KSC Joint Session: Heart Failure Controversies and Advances in Heart Transplant(HTx)/LVAD	Eng Case 2 (Heart Failure) 5-13	Cardiac Surgery Back to the Basic: Surgical Correction of Degenerative Mitral Regurgitation	
			Eng 14:40-15:40 APSACHD 5 What We Need to Be Aware of				
15:00 - 16:30	Myocardial Infarction 1 Recent Advancement and Future in Treatment of AMI	Arrhythmia 1 Basic, Digital Health & Innovations in EP	Eng 15:50-16:50 APSACHD 6 Multidisciplinary Case Based Approach to ACHD	Echocardiography 1 Echocardiography for Intervention	Eng A Oral Abstracts 1 1-9	개원의 연수강좌 1 고혈압 관리 (Practical Issues in Home BP Monitoring and Smart Device)	
16:40 - 18:10	Myocardial Infarction 2 Practical Tips and Tricks for the Management of AMI	Arrhythmia 2 AF (Anticoagulation 포함)		Echocardiography 2 Debates in Multimodality Imaging	Eng A Oral Abstracts 2 10-18	개원의 연수강좌 2 Practical Guide for Non-drug Risk Factor Modification: Diet, Exercise, Weight Control, Psychologic Support	

**JCS: Japanese Circulation Society

DAY 2 Program at a glance

A Abstract Presentation **Eng** English Session

	Channel 1	Channel 2	Channel 3	Channel 4	Channel 5	Channel 6	Abstract Library	
08:30 - 10:00	Eng New Frontiers in Cardiology 1 Precision Medicine in Cardiovascular Disease	Arrhythmia 3 Clinical EP-1 (SVT, Atrial Tachyarrhythmia & EP Procedure)	Cross Specialty: Neurology & Intervention Stroke Prevention in PFO and Carotid Artery Disease	Eng Echocardiography 3 Heart as the Victim	Eng Case 3 (Intervention) 14-17	Education Workshop 1: Heart Failure 2021 Pharmacologic and Non-pharmacologic Therapy of Heart Failure	Abstract 1-270	
					Eng Case 4 (AMI&CAD) 18-21			
10:10 - 11:40	New Frontiers in Cardiology 2 Digital Therapeutics	Arrhythmia 4 Clinical EP-2 (Ventricular Tachyarrhythmia)	Cross Specialty: Myocardial Infarction & Cardiogenic Shock Optimal Management for Cardiogenic Shock with AMI	Echocardiography 4 Learning from Faults, A Word from the Masters	Eng Case 5 (Pediatric Cardiology) 22-25	Education Workshop 2: Intervention Recent Update of ACS Treatment		
					Eng Case 6 (Echo&Imaging) 26-29			
11:50 - 12:30	Scientific Session [Viatris] When and Why Atorvastatin Portfolio Is Needed	Scientific Session [BMS/Pfizer] Anticoagulation for Better Patients Outcome	Scientific Session [Novartis] ARNI: The Essential Standard of Care for Heart Failure	Scientific Session [Samjin] Updates on Antiplatelet Treatment Strategies	Scientific Session [Boryung] New Insights of Hypertension & SPAF			
12:30 - 12:50	Break							
12:50 - 14:20	Eng **TSOC-KSC Joint Session: Intervention Contemporary Approach to Coronary Bifurcation Lesion Treatment	Heart Failure 1 2021 Update on HF Guidelines	Cross Specialty: Neurology & Arrhythmia AF Detection and Stroke Prevention in Patients with Stroke	Lipid Perspective on Anti-atherosclerotic Therapy in the Next Decade	Pediatric Cardiology 1 Right Heart Failure in Congenital Heart Disease 1	Education Workshop 3: Echocardiography Applying Updated Guidelines to Clinical Practice: Case-based Approach		
14:30 - 16:00	Intervention 3 Which Is the Winner for Long-term Management of Patients Undergoing Complex PCI?	Heart Failure 2 Essence of Recent HF Trials	Basic Research Hot Session 1	Hypertension 고혈압과 여성	Pediatric Cardiology 2 Right Heart Failure in Congenital Heart Disease 2	Education Workshop 4: Arrhythmia Essentials in Atrial Fibrillation Diagnosis and Management		
16:10 - 17:40	Intervention 4 CTO Recorded Live Session	Eng **ESC-KSC Joint Session: Arrhythmia Clinical Updates in Treatment of Atrial Fibrillation	Basic Research Hot Session 2	Women Heart Disease Korean Big Data on Sex Difference in Cardiovascular Disease	Ethics Workshop [필수교육] 무엇이 아름다운 연구인가?	Epidemiology Recent Advances in Cardiovascular Risk Prediction		
17:50 ~	정기 총회							

**TSOC: Taiwan Society of Cardiology **ESC: European Society of Cardiology

17
SUN.

2

DAY 3 Program at a glance

A Abstract Presentation **Eng** English Session

	Channel 1	Channel 2	Channel 3	Channel 4	Channel 5	Channel 6	Abstract Library
08:30 - 10:00	Cardiac Pathology Immunohistochemistry and Molecular Diagnosis of Cardiac Biopsies	Heart Failure 3 Debate: Hot Issues in HF Management	Update of Latest Clinical Trial What's New? Update of Key Clinical Trials 2021	Cardiometabolic Syndrome Debate Session: Beyond Statin	Eng A Oral Abstracts 3 19-27	Smart Health Cross-talk between Clinicians and Industry	
10:10 - 11:40	Eng Vascular Precision Medicine in Vascular Aging and CV Risk	Cardiogenic Shock Management of Cardiogenic Shock according to the Etiology	Guideline Review How to Apply Guideline in My Practice	Eng Basic Research Novel Insight and Mechanism of Heart Failure	Eng A Oral Abstracts 4 28-36	Cardio-Oncology Cardio-Oncology in New Decade: What Is New and Where to Go	
11:50 - 12:30	Scientific Session [Bayer] Patient Protection in Focus: Role of Rivaroxaban in High Risk Vascular Disease Patients	Scientific Session [Celltrion Pharm/ Dong-A ST] BP Control Strategies for Preventing Cardiovascular Disease	Scientific Session [Daiichisankyo/ Daewoong] Update on Diagnosis and Treatment of AF in Clinical Practice		A 최우수 한글 초록 구연1 37-40	A 최우수 한글 초록 구연2 41-44	Abstract 1-270
12:30 - 12:50	Break						
12:50 - 14:20	Intervention 5 Current Treatment - Aorta & Peripheral Artery Disease	Arrhythmia 5 SCD	Healthcare Policy 심혈관질환의 관리 개선	Echocardiography 5 Echocardiography in Critical Care Medicine	Eng A Oral Abstracts 5 45-53	Eng Geriatric Cardiology Frailty in Cardiovascular Disease	
14:30 - 16:00	Intervention 6 Technical Pearls for Complex TAVR Procedures: Case-based Learning	Arrhythmia 6 CIED	Insurance Issues 심혈관계 분야 보험관련 현안 및 전략	Echocardiography 6 How I Learned from My Counterpart	Eng A Oral Abstracts 6 54-62	Nurse-Technician Session Coronary Report Form	

HIGHLIGHT PROGRAM

Oct 16 (Sat.) 13:20 - 14:50

Channel 4

JCS-KSC Joint Session: Heart Failure

Controversies and Advances in Heart Transplant(HTx)/LVAD

Oct 17 (Sun.) 12:50 - 14:20

Channel 1

TSOC-KSC Joint Session: Intervention

Contemporary Approach to Coronary Bifurcation Lesion Treatment

Oct 17 (Sun.) 16:10 - 17:40

Channel 2

ESC-KSC Joint Session: Arrhythmia

Clinical Updates in Treatment of Atrial Fibrillation

18
MON.

3

평점 등록 안내

출석확인은 '각 세션' 마다 출결관리시스템(온라인 회의장 입장/이수 시간)으로 기록되며, 온라인 학술대회 홈페이지에 로그인하여 회의장에 입장한 시간부터 평점이 인정됩니다. 자세한 사항은 아래 내용 참고해주시기 바랍니다.

구분	10월 16일 (토)	10월 17일 (일)	10월 18일 (월)
대한의사협회(일반/필수)	6점	6점 필수교육 참여 시, 일반 5점 / 필수 1점	6점
대한내과학회 분과전문의		6점	
내과전공의 외부학술회의 (학술대회)	2점 (오전 1점, 오후 1점)		

대한의사협회 (일반/필수)

- 1 교수 및 개원의, 전임의, 전공의, 기타등록자 (의사면허 소지자)에 한합니다.
- 2 10월 17일 (일) 16:10-17:40 Ethics Workshop (필수교육)에 참석하시는 분들은 최대 6점 중 일반 5점, 필수 1점으로 인정됩니다.
- 3 평점인정시간 (최소 1점 ~ 최대 6점)

시간	평점
1시간 미만	인정 불가
1시간 이상 2시간 미만	1 평점
2시간 이상 3시간 미만	2 평점
3시간 이상 4시간 미만	3 평점
4시간 이상 5시간 미만	4 평점
5시간 이상 6시간 미만	5 평점
6시간 이상	6 평점

- 4 출석 확인은 '각 세션'마다 온라인 출결관리시스템으로 기록됩니다.
- 5 평점 불인정 사례
 - 1 동일 시간에 복수의 온라인 연수교육을 이수한 경우
(예: 동일 ID로 A강의와 B강의 동시 접속 불가)
 - 2 Break 시간

대한내과학회 분과전문의

- 1 (순환기)내과 분과전문의 (내과전문의번호 소지자)에 한합니다.
- 2 10월 17일 (일) 대한심장학회 분과전문의 연수강좌: Education Workshop 참석자 분들에게 평점 인정됩니다.
- 3 대한내과학회 분과전문의 평점은 대한의사협회 평점과 중복 인정 불가합니다.
- 4 온라인으로 개최됨에 따라 각 세션 (총 4개 세션)이 진행되는 동안 문제가 출제되며 총 100점 만점에 60점 이상 취득한 자에 한하여 평점이 인정 됩니다. (60점 미만일 경우 평점 부여 불가)
- 5 평점인정시간 (최소 1점 ~ 최대 6점)

시간	평점
1시간 미만	인정 불가
1시간 이상 2시간 미만	1 평점
2시간 이상 3시간 미만	2 평점
3시간 이상 4시간 미만	3 평점
4시간 이상 5시간 미만	4 평점
5시간 이상 6시간 미만	5 평점
6시간 이상	6 평점

내과전공의 외부학술회의 (학술대회)

- 1 내과전공의 (의사면허 소지자)에 한합니다.
- 2 평점인정시간: 학술대회 기간 중 오전 1점, 오후 1점 (개최기간 관계없이 최대 2점 인정)

시간	평점
오전 3시간	1 점
오후 3시간	1 점

Invited Speakers

KSC 2021



Bonnie Ky
University of
Pennsylvania,
USA



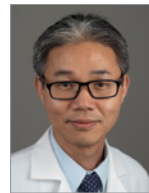
Chi-Jen Chang
Chang Gung
Memorial Hospital,
Taiwan



Cholsoon Jang
University of California,
USA



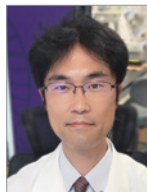
Dipen Shah
Geneva University,
Switzerland



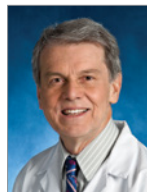
Dae Hyun Kim
Beth Israel Deaconess
Medical Center,
USA



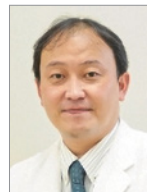
Haejin Yoon
Harvard Medical
School,
USA



Ippei Shimizu
Juntendo University,
Japan



Joao A C Lima
Johns Hopkins
University,
USA



Masaru Hatano
The University of Tokyo,
Japan



Norihide Fukushima
National Cerebral and
Cardiovascular Center,
Japan



Po-Ming Ku
Chi-Mei Medical
Center,
Taiwan



Rick Grobbee
Utrecht University,
Netherlands



Seung Hoan Choi
Broad Institute of MIT
and Harvard,
USA



Tatjana Potpara
Belgrade University,
Serbia



Thomas Marwick
Baker Institute,
Australia



Anita Saxena
All India Institute of
Medical Sciences,
India



**Apichai
Khongphattthanayothin**
Chulalongkorn University,
Thailand



Aurelia Leus
Philippine Heart
Center,
Philippine



Aya Miyazaki
Shizuoka General
Hospital, Shizuoka
Children's Hospital,
Japan



Geetha Kandavello
Institut Jantung
Negara National Heart
Institute,
Malaysia



Hideo Ohuchi
National Cerebral and
Cardiovascular Center,
Japan



Ju Le Tan
National Heart Centre
Singapore,
Singapore



Koichiro Niwa
St Luke's International
Hospital,
Japan



Masood Sadiq
The Institute of Child
Health/Children's
Hospital,
Pakistan



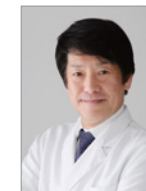
Mei-Hwan Wu
National Taiwan
University Hospital and
College of Medicine,
Taiwan



Shingo Kasahara
Okayama University
Hospital,
Japan



**Sivakumar
Sivalingam**
Institut Jantung
Negara National Heart
Institute,
Malaysia



Teiji Akagi
Okayama University
Hospital,
Japan



Yiu-Fai Cheung
University of Hong
Kong,
Hong Kong

Invited Speakers

The 2nd Asia Pacific Society for Adult Congenital Heart Disease Symposium

16 Sat.

DAY 1
KSC 2021 Program

08:50 - 10:00

Eng APSACHD 1

Channel 3

08:50 - 09:00 **Welcome Remarks**
Heung Jae Lee, Koichiro Niwa, Seung Woo Park

Heart Failure in ACHD

Chairperson(s) Teiji Akagi, I Seok Kang

09:00 - 09:15 **Diastolic Heart Failure in ACHD**
Yiu-Fai Cheung / Univ. of Hong Kong, Hong Kong

09:15 - 09:30 **Heart Failure in SV Physiology**
Hideo Ohuchi / National Cerebral and Cardiovascular Center, Japan

09:30 - 09:45 **RV Failure in ACHD**
Lucy Youngmin Eun / Yonsei Univ., Korea

09:45 - 10:00 **Discussion**



09:00 - 10:30

Featured Education Session 1. Instruction of Clinical Research

Channel 1

Instruction of Clinical Research for Research Beginners

Chairperson(s) 김호수, 강덕현

Panel 윤종찬, 최익근

09:00 - 09:15 **연구초보자를 위한 임상연구설계 및 데이터 관리 요령**
박덕우 / 울산의대

09:15 - 09:30 **의학통계의 위험한 함정들**
박준빈 / 서울의대

09:30 - 09:45 **영어의학논문 잘 쓰고 잘 출간하기 위한 전략**
한주용 / 성균관의대

09:45 - 10:00 **국제학회 영어발표 실패를 피하는 길**
박경우 / 서울의대

10:00 - 10:15 **국책 과제 연구비를 수주하기 위한 노하우**
장혁재 / 연세의대

10:15 - 10:30 **Discussion**

Intervention 1

Channel 2

Tough Calls during PCI

Chairperson(s) 안영근, 유철웅

Panel 문재연, 홍영준

09:00 - 09:15 **Optimizing PCI in Heavy Calcified Lesions**
임영호 / 한양의대

09:15 - 09:30 **How to Handle Spontaneous Coronary Artery Dissection**
우종신 / 경희의대

09:30 - 09:45 **How to Manage Slow and No-reflow during Primary PCI**
이종영 / 성균관의대

09:45 - 10:00 **Coronary Perforation during PCI: How to Prevent and Manage**
이현종 / 부천세종병원

10:00 - 10:30 **Discussion**

DAY

1

10:10 - 11:10
 Eng APSACHD 2 Channel 3

Valvular Problem in ACHD

Chairperson(s) Seung Woo Park, Jae Young Choi

- 10:10 - 10:25 **Aortic Valve Problem in ACHD**
Han Ki Park / Yonsei Univ., Korea
- 10:25 - 10:40 **What to Look at and Concern for Post Status of Pulmonary Valve Implantation**
So Ick Jang / Bucheon Sejong Hospital, Korea
- 10:40 - 10:55 **What to Do for Systemic AV Valve Regurgitation in SV**
Sivakumar Sivalingam / Institute Jantung Negara National Heart Institute, Malaysia
- 10:55 - 11:10 **Discussion**

10:40 - 12:10
 Featured Education Session 2. ECG Case Series Channel 1

ECG Case Series

Chairperson(s) 김남호, 황교승
Panel 곽재진, 박환철

- 10:40 - 10:55 **Sinus Node Dysfunction**
백용수 / 인하의대
- 10:55 - 11:10 **AV Block**
박진규 / 한양의대
- 11:10 - 11:25 **SVT**
이정명 / 경희의대
- 11:25 - 11:40 **VT**
안진희 / 부산의대
- 11:40 - 11:55 **SCD – Long QT, Brugada, Early Repolarization, etc**
안민수 / 연세원주의대
- 11:55 - 12:10 **Miscellaneous – Drug, Electrolyte, etc**
노승영 / 고려의대

Intervention 2 Channel 2

Master, Please Let Me Know How to Apply Imaging & Physiology in My Practice

Chairperson(s) 홍명기, 구본권
Panel 김병극, 남창욱

- 10:40 - 10:55 **How to Apply Coronary CTA for ACS in the High-sensitivity Troponin Era?**
신상훈 / 이화의대
- 10:55 - 11:10 **How to Apply IVUS for Intermediate Diffuse Long Lesion?**
홍성진 / 연세의대
- 11:10 - 11:25 **How to Apply OCT for Myocardial Infarction with No Obstructive Coronary Arteries?**
윤혁준 / 계명대의대
- 11:25 - 11:40 **How to Apply FFR & iFR for Silent Ischemia: Treat or Not Treat?**
이주명 / 성균관대의대
- 11:40 - 12:10 **Discussion**

11:20 - 12:20
 Eng APSACHD 3 Channel 3

My Tips for ACHD with Heart Failure

Chairperson(s) Geetha Kandavello, Seong-Ho Kim

- 11:20 - 11:35 **What Physicians Should Help How to Improve the Surgical Outcome?**
Mei-Hwan Wu / National Taiwan Univ. Hospital and College of Medicine, Taiwan
- 11:35 - 11:50 **Thromboembolism Event in ACHD with Heart Failure**
June Huh / Sungkyunkwan Univ., Korea
- 11:50 - 12:05 **My Experiences of COVID-19 with ACHD**
Anita Saxena / All India Institute of Medical Sciences, India
- 12:05 - 12:20 **Discussion**



12:20 - 13:00

Diamond Session [BMS/Pfizer]

Channel 1

Latest Insights of Anticoagulation Management**Chairperson(s)** 박희남

- 12:20 - 12:40 **2021 EHRA Practical Guide on the Use of NOAC in Patients with Atrial Fibrillation**
최익근 / 서울의대
- 12:40 - 13:00 **Anti-Coagulation in Different Patient Populations: Frailty and Advanced Age**
심재민 / 고려의대

Diamond Session [Viatris]

Channel 2

Unchangeable 1st Option of Lipid Management**Chairperson(s)** 이병권, 김준홍

- 12:20 - 12:40 **2021 Why Treatment Continuum Is Important?: A Tolerable Statin as a First Treatment Option and Ezetimibe/Atorvastatin Combination as a Next Choice**
이경훈 / 가천의대
- 12:40 - 13:00 **Lower for Longer: Impact of Statins on CV Outcomes**
신상훈 / 이화의대

Scientific Session [Amgen]

Channel 3

Lipid Management After ACS: The Role of PCSK9 Inhibition**Chairperson(s)** 김효수, 조덕규

- 12:20 - 12:35 **Early Optimization of Lipid Lowering Therapy Post-ACS**
김충기 / 이화의대
- 12:35 - 12:50 **Patient Centricity: Evolocumab for Whom, When and How?**
우종신 / 경희의대
- 12:50 - 13:00 **Discussion**

Scientific Session [Organon]

Channel 4

Early & Lower for Longer: Prevention of Cardiovascular Disease**Chairperson(s)** 장기욱

- 12:20 - 12:40 **Early for Longer: The Benefit of Atorvastatin/Ezetimibe Combination Therapy for Primary Prevention of CAD**
권성욱 / 인제의대
- 12:40 - 13:00 **Lower for Longer: Reducing Cumulative Exposure to Elevated LDL-C to Prevent Cardiovascular Disease**
이종영 / 성균관의대

Scientific Session [Hanmi]

Channel 5

Strategies for Cardiovascular Disease Prevention in Hypertension and Dyslipidemia**Chairperson(s)** 안영근, 허승호

- 12:20 - 12:40 **The Recent Trend of Simultaneous Management of Hypertension and Dyslipidemia**
김원 / 경희의대
- 12:40 - 13:00 **Why Should We Consider Strongly Rosuvastatin Ezetimibe Fixed-Dose Combination?**
윤혁준 / 계명의대

DAY

1



13:20 - 14:50

Imaging

Channel 1

Imaging for Arrhythmia and Vasculatures

Chairperson(s) 박희남, 강원준
Panel 옹환석, 임우현

- 13:20 - 13:40 **Role of Imaging in Arrhythmia Treatment: EP Interventionist's View**
조민수 / 울산의대
- 13:40 - 14:00 **Role of CT/MRI for Electrophysiology Procedures**
황성호 / 고려의대
- 14:00 - 14:20 **CT/MRI for Evaluation of Vasculatures: Artery, Vein, and Lymphatics**
구현정 / 울산의대
- 14:20 - 14:40 **Nuclear Imaging for Arrhythmia and Vasculature**
문승환 / 성균관의대
- 14:40 - 14:50 **Discussion**

Cross Specialty: Heart Failure & Arrhythmia

Channel 2

Cross Specialty Debate: Hot Issues in HF & EP

Chairperson(s) 채성철, 이문형
Panel 김성해, 박승정

- 13:20 - 13:32 **Pro: ICD in Non-ischemic Cardiomyopathy – 6 Months of GDMT Is Enough**
이지현 / 서울의대
- 13:32 - 13:44 **Con: ICD in Non-ischemic Cardiomyopathy – 6 Months of GDMT Is Too Short**
김경진 / 이화의대
- 13:44 - 13:49 **Pro Rebuttal**
이지현 / 서울의대
- 13:49 - 13:54 **Con Rebuttal**
김경진 / 이화의대
- 13:54 - 14:05 **Discussion**

- 14:05 - 14:17 **Pro: All Patients with AF and HF Should Be Referred for Ablation**
심재민 / 고려의대
- 14:17 - 14:29 **Con: Not All Patients with AF and HF Should Be Referred for Ablation**
김경희 / 인천세종병원
- 14:29 - 14:34 **Pro Rebuttal**
심재민 / 고려의대
- 14:34 - 14:39 **Con Rebuttal**
김경희 / 인천세종병원
- 14:39 - 14:50 **Discussion**

Eng *JCS-KSC Joint Session: Heart Failure

Channel 4

Controversies and Advances in Heart Transplant(HTx)/LVAD

Chairperson(s) Norihide Fukushima, Jae Joong Kim
Panel Sung Ho Jung, Hyun-Jai Cho

- 13:20 - 13:38 **Current Status and Future Aspects of HTx/LVAD in Korea**
Sang Eun Lee / Ulsan Univ., Korea
- 13:38 - 13:56 **Current Status and Future Aspects of HTx and VAD in Japan**
Norihide Fukushima / National Cerebral and Cardiovascular Center, Japan
- 13:56 - 14:14 **HTx and Malignancy**
Jong-Chan Youn / Catholic Univ., Korea
- 14:14 - 14:32 **Updated Treatment Strategy for Advanced Heart Failure in Japan**
Masaru Hatano / Univ. of Tokyo, Japan
- 14:32 - 14:50 **Discussion**

*JCS: Japanese Circulation Society

DAY

1

Cardiac Surgery

Channel 6

Back to the Basic: Surgical Correction of Degenerative Mitral Regurgitation

Chairperson(s) 이석재, 김대희

Panel 임주영, 최재웅

13:20 - 13:40	Surgical Techniques and Current Results of Surgical Artificial Chorda Formation 제형근 / 부산의대
13:40 - 14:00	Surgical Techniques and Current Results of Surgical Edge-to-edge Mitral Valve Repair 이승현 / 연세의대
14:00 - 14:20	Current Evidence of Mitral Valve Repair vs Mitral Valve Replacement for Degenerative MR 황호영 / 서울의대
14:20 - 14:40	Intraoperative TEE: I Know What You Did to Mitral Valve 심재광 / 연세의대
14:40 - 14:50	Discussion



13:30 - 14:30

Eng APSACHD 4

Channel 3

Heart Failure & Rhythm Problem in ACHD

Chairperson(s) Apichai Khongphatthanayothin, Eun-Jung Bae

13:30 - 13:45	CRT in ACHD Aya Miyazaki / Shizuoka General Hospital and Shizuoka Children's Hospital, Japan
13:45 - 14:00	Role of Atrial Arrhythmias Complex CHD in SV Jae-Sun Uhm / Yonsei Univ., Korea
14:00 - 14:15	Surgical Management for Atrial and Ventricular Arrhythmia Woong-Han Kim / Seoul National Univ., Korea
14:15 - 14:30	Discussion



14:40 - 15:40

Eng APSACHD 5

Channel 3

What We Need to Be Aware of

Chairperson(s) Masood Sadiq, Tae Gook Jun

14:40 - 14:55	Surgeon's Concerns Related to Device Implantation in ACHD (ASD, Pulmonary Valve) Shingo Kasahara / Okayama Univ. Hospital, Japan
14:55 - 15:10	Surgeon's Concerns about Complicated ACHD Case with Coronary or Aorta Problem Chang-Ha Lee / Bucheon Sejong Hospital, Korea
15:10 - 15:25	Surgeon's Concerns about VAD & Heart Transplantation in ACHD Yang Hyun Cho / Sungkyunkwan Univ., Korea
15:25 - 15:40	Discussion



15:00 - 16:30

Myocardial Infarction 1

Channel 1

Recent Advancement and Future in Treatment of AMI

Chairperson(s) 박현식, 채인호

Panel 신은석, 이상엽

15:00 - 15:15	Hypercoagulability in AMI and Antithrombotic Therapy 정영훈 / 을지의대
15:15 - 15:30	De-escalation of Antiplatelet Therapy after Stabilization of AMI 추은호 / 가톨릭의대
15:30 - 15:45	Deferred Stenting for Reducing Reperfusion Injury 유철웅 / 고려의대
15:45 - 16:00	Therapeutic Approach of Late Presenters in STEMI 조경훈 / 전남의대
16:00 - 16:15	The Next Frontiers? - ARNI, SGLT2 Inhibitors for AMI 송영빈 / 성균관대의대
16:15 - 16:30	Discussion

DAY

1

Arrhythmia 1

Channel 2

Basic, Digital Health & Innovations in EP

Chairperson(s) 남기병, 김대경**Panel** 장성원, 최종일

15:00 - 15:15	Anatomy of Cardiac Venous System 이성호 / 성균관대의대
15:15 - 15:30	Genetic Risk Stratification for Cardiac Arrhythmias 김윤기 / 고려의대
15:30 - 15:45	Cutting Edge Technologies: Recent Innovations in Cardiac Electrophysiology 김주연 / 성균관대의대
15:45 - 16:00	Artificial Intelligence in EP Clinical Practice 이대인 / 충북의대
16:00 - 16:15	Smart Wearable Devices in Cardiovascular Care 박형섭 / 계명대의대
16:15 - 16:30	Discussion

Eng Echocardiography 1

Channel 4

Echocardiography for Intervention

Chairperson(s) 강덕현, 박승우**Panel** 나진오, 박찬석

15:00 - 15:16	ASD/PFO Device Closure 정우백 / 가톨릭의대
15:16 - 15:33	TAVR 문정근 / 가천의대
15:33 - 15:50	TEER 강도윤 / 울산의대
15:50 - 16:10	LA Appendage Occlusion 이현중 / 부천세종병원
16:10 - 16:30	Discussion

개원의 연수강좌 1

Channel 6

고혈압 관리 (Practical Issues in Home BP Monitoring and Smart Device)

Chairperson(s) 임상현, 김광일**Panel** 손일석, 최성훈

15:00 - 15:20	가정혈압의 표준 측정법 어떻게 교육할까? 박재형 / 충남의대
15:20 - 15:40	가면 고혈압, 백의 고혈압, 아침 고혈압의 정의와 생활습관 교정 김현진 / 한양의대
15:40 - 16:00	가정 혈압 측정 결과를 반영한 약제 치료 신정훈 / 한양의대
16:00 - 16:20	Smart Device의 발전과 가정혈압 측정 김주한 / 전남의대
16:20 - 16:30	Discussion



15:50 - 16:50

Eng APSACHD 6

Channel 3

Multidisciplinary Case Based Approach to ACHD

Chairperson(s) Ju Le Tan, Tae-Jin Yun

15:50 - 16:05	1) CASE Aurelia Leus / Philippine Heart Center, Philippines
16:05 - 16:20	2) CASE Mi Kyoung Song / Seoul National Univ., Korea
16:20 - 16:35	3) CASE Sung-A Chang / Sungkyunkwan Univ., Korea
16:35 - 16:50	Discussion

DAY

1



16:40 - 18:10

Myocardial Infarction 2

Channel 1

Practical Tips and Tricks for the Management of AMI

Chairperson(s) 정명호, 황진웅
Panel 김원, 한주웅

16:40 - 16:55	Standing Alone in the Battlefield of Primary PCI 이승현 / 전남의대
16:55 - 17:10	Korean Expert Consensus on Revascularization for AMI 장기욱 / 가톨릭의대
17:10 - 17:25	AMI Guideline: How to Close the Gap between Theory and Practice? 이장훈 / 경북의대
17:25 - 17:40	Secret Toolbox of Lipid-lowering Agent: My Strategy 이현중 / 부천세종병원
17:40 - 17:55	Timing of Coronary Angiography in NSTEMI-ACS with Acute HF 김민철 / 전남의대
17:55 - 18:10	Discussion

Arrhythmia 2

Channel 2

AF (Anticoagulation 포함)

Chairperson(s) 오용석, 이명용
Panel 김동혁, 박형욱

16:40 - 16:55	Revisiting Rhythm vs. Rate Control: AFFIRM to EAST-AFNET 4 조영진 / 서울의대
16:55 - 17:10	Risk and Prevention of Dementia in Patient with AF 성정훈 / 차의대
17:10 - 17:25	Ablation for Initial Treatment of AF: Cryo or Radiofrequency 은영근 / 성균관대의대
17:25 - 17:40	Implication of AF Screening Tools: Pulse Taking to AI Diagnosis 박준범 / 이화대의대
17:40 - 17:55	Pulsed Field Ablation for AF 이의재 / 부천세종병원
17:55 - 18:10	Discussion

Echocardiography 2

Channel 4

Debates in Multimodality Imaging

Chairperson(s) 권준, 조구영

16:40 - 16:50	CMR in Aortic Stenosis, CMR Should Be Included 박성지 / 성균관대의대
16:50 - 17:00	Wait, Not Yet! (CMR in Aortic Stenosis, CMR Should Be Included) 김계훈 / 전남의대
17:00 - 17:03	Rebuttal from the Pros Side
17:03 - 17:06	Rebuttal from the Cons Side
17:06 - 17:10	Discussion & Wrap-up of the 1st Debate
17:10 - 17:20	Functional vs. Anatomic in CAD, Anatomical Imaging First! 이상은 / 이화대의대
17:20 - 17:30	Functional Imaging First! 강원준 / 연세의대
17:30 - 17:33	Rebuttal from the Pros Side
17:33 - 17:36	Rebuttal from the Cons Side
17:36 - 17:40	Discussion & Wrap-up of the 2nd Debate
17:40 - 17:50	TEE in Aortic Dissection, TEE, It Is Mandatory 김대희 / 울산의대
17:50 - 18:00	Why Bother to Do TEE? (TEE in Aortic Dissection) 최의영 / 연세의대
18:00 - 18:03	Rebuttal from the Pros Side
18:03 - 18:06	Rebuttal from the Cons Side
18:06 - 18:10	Discussion & Wrap-up of the 3rd Debate

DAY

1

개원의 연수강좌 2

Channel 6

**Practical Guide for Non-drug Risk Factor Modification:
Diet, Exercise, Weight Control, Psychologic Support**

Chairperson(s) 김치정, 김두일
Panel 성지동, 조은주

16:40 - 17:00	심혈관질환 예방과 관리에 도움을 줄 수 있는 한국인의 밥상은? 관유진 / 연세의대
17:00 - 17:20	심혈관 환자들을 위한 안전하고 효과적인 가정운동법 전용관 / 연세대학교
17:20 - 17:40	체중감량이 고혈압, 고지혈증, 당뇨 관리에 얼마나 도움이 될까? 김현진 / 한양의대
17:40 - 18:00	심혈관 질환 위험 인자 관리를 위한 심리 상담 프로그램의 효과 김종남 / 서울여자대학교
18:00 - 18:10	Discussion

17 Sun. | **DAY 2**
KSC 2021 Program

1 08:30 - 10:00

Eng **New Frontiers in Cardiology 1**

Channel 1

Precision Medicine in Cardiovascular Disease

Chairperson(s) Myeong-Chan Cho, Kyung Hwan Kim
Panel Sang-Hak Lee, Jong-Il Choi

08:30 - 08:50	Public DBs and New Analytic Tools, Potentials for Future Research Seunggeun Lee / Seoul National Univ., Korea
08:50 - 09:05	Precision Medicine for Pulmonary Arterial Hypertension Wook-Jin Chung / Gachon Univ., Korea
09:05 - 09:25	Atrial Fibrillation, Its Genetic Landscape and the Recent Progress Seung Hoan Choi / Broad Institute of MIT and Harvard, USA
09:25 - 09:40	Genetics in Metabolic Disease and Its Use for ASCVD Prediction Seung Pyo Lee / Seoul National Univ., Korea
09:40 - 10:00	Discussion

Arrhythmia 3

Channel 2

Clinical EP-1 (SVT, Atrial Tachyarrhythmia & EP Procedure)

Chairperson(s) 최기준, 차태준
Panel 최하영, 현대우

- 08:30 - 08:45 **Mapping and Ablation of Slow Pathway in AVNRT**
김진석 / 고려의대
- 08:45 - 09:00 **Mapping and Ablation of Difficult Accessory Pathways**
김유리 / 동국대의대
- 09:00 - 09:15 **Mapping and Ablation of Atrial Tachyarrhythmias after AF Ablation**
김준 / 울산의대
- 09:15 - 09:30 **How to Reduce Complication during EP Procedures**
이영수 / 대구가톨릭의대
- 09:30 - 09:45 **How to Perform Fluoroless EP Procedures**
임홍익 / 한림의대
- 09:45 - 10:00 **Discussion**

Cross Specialty: Neurology & Intervention

Channel 3

Stroke Prevention in PFO and Carotid Artery Disease

Chairperson(s) 구자성, 한성우
Panel 김우현, 장민욱

- 08:30 - 08:50 **The Causality of PFO in Cryptogenic Stroke**
김범준 / 울산의대
- 08:50 - 09:10 **Where Are We Today?: Recent Update in PFO Management**
박재형 / 고려의대
- 09:10 - 09:30 **How Can We Predict High-risk Carotid Plaque?**
장채원 / 건양의대
- 09:30 - 09:50 **Treat or Not-treat?: Management of Carotid Artery Stenosis for Stroke Prevention**
박형중 / 계명대의대
- 09:50 - 10:00 **Discussion**

Eng Echocardiography 3

Channel 4

Heart as the Victim

Chairperson(s) Se Joong Rim, Sangchol Lee
Panel Iksung Cho, In Chang Hwang

- 8:30 - 08:45 **Acute Carbon Monoxide Poisoning and Myocardial Damage**
Dong-Hyuk Cho / Yonsei Wonju Univ., Korea
- 08:45 - 09:05 **Advances in Cardiovascular Imaging to Inform Cancer Therapy Cardiotoxicity**
Bonnie Ky / Univ. of Pennsylvania, USA
- 09:05 - 09:25 **Myocardial Toxins-Metabolic Heart Disease**
Thomas Marwick / Baker Institute, Australia
- 09:25 - 09:40 **Vigorous Exercise**
Jeong Geun Moon / Gachon Univ., Korea
- 09:40 - 10:00 **Discussion**

Education Workshop 1: Heart Failure

Channel 6

2021 Pharmacologic and Non-pharmacologic Therapy of Heart Failure

Chairperson(s) 강석민, 유병수
Panel 김계훈, 박재형

- 08:30 - 08:45 **Recent Update of Pharmacologic Therapy of Heart Failure (1) – ARNI, SGLT2**
조현재 / 서울의대
- 08:45 - 09:00 **Recent Update of Pharmacologic Therapy of Heart Failure (2) – Vericiguat, Omecamtiv**
이찬주 / 연세의대
- 09:00 - 09:15 **Device Therapy in Chronic Heart Failure – ICD, CRT**
박준범 / 이화의대
- 09:15 - 09:30 **LVAD in Acute/Chronic Heart Failure**
최진오 / 성균관대의대
- 09:30 - 09:45 **Heart Transplantation in Acute/Chronic Heart Failure**
김경희 / 인천세종병원
- 10:00 - 10:30 **Discussion**



10:10 - 11:40

New Frontiers in Cardiology 2

Channel 1

Digital Therapeutics

Chairperson(s) 정명호, 정익모
Panel 김현창, 윤창환

10:10 - 10:30	Digital Therapeutics in Heart Disease 강성지 / 웰트㈜
10:30 - 10:50	Clinical Utility of Smartwatch Based Blood Pressure Measurement 이해영 / 서울의대
10:50 - 11:10	Digital Therapeutics in Diet and Glucose Control 이정은 / 서울대학교
11:10 - 11:30	Current Status and Future Perspectives of Digital Therapeutics in Cardiac Rehabilitation 김철 / 인제의대
11:30 - 11:40	Discussion

Arrhythmia 4

Channel 2

Clinical EP-2 (Ventricular Tachyarrhythmia)

Chairperson(s) 정병천, 남궁준
Panel 김도영, 김진배

10:10 - 10:25	Mapping and Ablation of Outflow Tract VT 박경민 / 성균관의대
10:25 - 10:40	Mapping and Ablation of Fascicular VT 한성욱 / 계명대
10:40 - 10:55	Mapping and Ablation of Papillary Muscle VT 김성환 / 가톨릭의대
10:55 - 11:10	Mapping and Ablation of LV Summit VT 김태훈 / 연세의대
11:10 - 11:25	How to Use 3D Electroanatomical Mapping Systems 오세일 / 서울의대
11:25 - 11:40	Discussion

Cross Specialty: Myocardial Infarction & Cardiogenic Shock

Channel 3

Optimal Management for Cardiogenic Shock with AMI

Chairperson(s) 권현철, 안영근
Panel 김민석, 배장환

10:10 - 10:25	Optimal Timing of VA-ECMO: Before or After PCI? 안철민 / 연세의대
10:25 - 10:40	LV Unloading Strategy after VA-ECMO 양정훈 / 성균관의대
10:40 - 10:55	PCI Strategy for Cardiogenic Shock with AMI 김민철 / 전남의대
10:55 - 11:10	Optimal Medical Therapy: Is It Different Compared to Those without Shock? 이상엽 / 충북의대
11:10 - 11:25	VA-ECMO and Surgery for Post-Infarction VSD with CS 정재승 / 고려의대
11:25 - 11:40	Discussion

Echocardiography 4

Channel 4

Learning from Faults, A Word from the Masters

Chairperson(s) 김우식, 김성환
Panel 손일석, 신성희

10:10 - 10:25	깜짝 놀랐던 무서운 Case 정해역 / 가톨릭의대
10:25 - 10:40	Oops, Where Are You Going? 송종민 / 울산의대
10:40 - 10:55	Misguided by Preconception 이상철 / 성균관의대
10:55 - 11:10	호흡곤란으로 온 81세 남자환자 홍그루 / 연세의대
11:10 - 11:25	Why Numbers Don't Matter 김용진 / 서울의대
11:25 - 11:40	Discussion

Education Workshop 2: Intervention

Channel 6

Recent Update of ACS Treatment

Chairperson(s) 홍명기, 구분권
Panel 김병극, 한주용

10:10 - 10:25	Recent Update of Antiplatelet Therapy for ACS 정영훈 / 을지대
10:25 - 10:40	Optimal Strategy for Cardiogenic Shock with Multivessel CAD in AMI 장기욱 / 가톨릭대
10:40 - 10:55	Optimal Strategy for Unprotected LM Disease in ACS 박덕우 / 울산대
10:55 - 11:10	Functional Assessment of Non-culprit Lesions in ACS 남창욱 / 계명대
11:10 - 11:25	Optimal Medical Treatment in AMI Patients 한정규 / 서울대
11:25 - 11:40	Discussion



11:50 - 12:30

Scientific Session [Viatris]

Channel 1

When and Why Atorvastatin Portfolio Is Needed

Chairperson(s) 조병렬, 나득영

11:50 - 12:10	Let Start High Intensity Statin for ACS Patients, Let's Start 강도윤 / 울산대
12:10 - 12:30	The Lower the Better: Atorvastatin's Next Option for Dyslipidemia Management 박상호 / 순천향대

Scientific Session [BMS/Pfizer]

Channel 2

Anticoagulation for Better Patients Outcome

Chairperson(s) 운영근

11:50 - 12:10	Dosing Strategies for Long-term Persistence and Adherence 조민수 / 울산대
12:10 - 12:30	Real World Updates in Anticoagulation Management 유희태 / 연세대

Scientific Session [Novartis]

Channel 3

ARNI: The Essential Standard of Care for Heart Failure

Chairperson(s) 정명호, 강석민

11:50 - 12:10	Optimal Treatment of Heart Failure according to 2021 ESC Heart Failure Guideline 조현재 / 서울대
12:10 - 12:30	Reinforce Your Strategies to Improve Outcomes in POST-MI Heart Failure 한주용 / 성균관대

Scientific Session [Samjin]

Channel 4

Updates on Antiplatelet Treatment Strategies

Chairperson(s) 김효수, 허승호

11:50 - 12:05	Role of Clopidogrel for ACS 박덕우 / 울산대
12:05 - 12:20	Review of HOST-EXAM: Patients Management after PCI 강지훈 / 서울대
12:20 - 12:30	Discussion

Scientific Session [Boryung]

Channel 5

New Insights of Hypertension & SPAF

Chairperson(s) 임상현, 정보영

11:50 - 12:10 **New Clinical Trial of Fimasartan: FANTASTIC, FITNESS**
오재원 / 연세의대12:10 - 12:30 **Current Evidence in SPAF: From RE-VOLUTION to Gloria AF**
이소령 / 서울의대

12:50 - 14:20

Eng *TSOC-KSC Joint Session: Intervention

Channel 1

Contemporary Approach to Coronary Bifurcation Lesion Treatment

Chairperson(s) Chi-Jen Chang, Bon-Kwon Koo

Panel Chang-Wook Nam

12:50 - 13:10 **Provisional Side Branch Approach: When and How?**
Soon Jun Hong / Korea Univ., Korea13:10 - 13:30 **Upfront 2-stent Approach for Bifurcation Lesion: When and How?**
Chi-Jen Chang / Chang Gung Memorial Hospital, Taiwan13:30 - 13:50 **Physiology-guided Bifurcation Lesion Treatment**
Joo Myung Lee / Sungkyunkwan Univ., Korea13:50 - 14:10 **How OCT/IVUS Can Help You During PCI for Bifurcations**
Po-Ming Ku / Chi-Mei Medical Center, Taiwan14:10 - 14:20 **Discussion**

*TSOC: Taiwan Society of Cardiology

Heart Failure 1

Channel 2

2021 Update on HF Guidelines

Chairperson(s) 조명찬, 강석민

Panel 유병수, 최성훈

12:50 - 13:05 **Do We Agree the New Universal Definition and Classification of HF**
김인철 / 계명대의대13:05 - 13:20 **What's New Changes in HFrEF?**
조재영 / 전남의대13:20 - 13:35 **What's New Consideration in HFpEF?**
김미나 / 고려의대13:35 - 13:50 **What's New in HF Device & Surgery?**
박진주 / 서울의대13:50 - 14:20 **Discussion**

Cross Specialty: Neurology & Arrhythmia

Channel 3

AF Detection and Stroke Prevention in Patients with Stroke

Chairperson(s) 이승훈, 곽충환

Panel 김치경, 배명환

12:50 - 13:05 **When and How to Screen for AF in Patients with Embolic Stroke of Undetermined Source**
구자성 / 가톨릭의대13:05 - 13:20 **How Long of AF Detected by Implantable Loop Recorder Is Significant for Recurrence of Stroke?**
부기영 / 제주대의대13:20 - 13:35 **Anticoagulation Strategy in Patients with AF and Stroke with Hemorrhagic Transformation or Microbleeds**
김진권 / 연세의대13:35 - 13:50 **Role of LAAO in Patients with AF and Stroke**
신승용 / 중앙의대13:50 - 14:05 **Role of Catheter Ablation for AF in Patients with Stroke**
최영 / 가톨릭의대14:05 - 14:20 **Discussion**

Lipid Channel 4**Perspective on Anti-atherosclerotic Therapy in the Next Decade****Chairperson(s)** 최동훈, 한기훈**Panel** 김상현, 이상학12:50 - 13:12 **What's New in Genetic-, Bio-, and Imaging Markers?**
주형준 / 고려의대13:12 - 13:34 **ANGPTL3 and ApoC3 as Novel Treatment Targets**
이찬주 / 연세의대13:34 - 13:56 **Update on Anti-inflammatory Agents**
심두선 / 전남의대13:56 - 14:20 **Discussion****Pediatric Cardiology 1** Channel 5**Right Heart Failure in Congenital Heart Disease 1****Chairperson(s)** 배은정**Panel** 윤지홍, 조영국12:50 - 13:05 **Anatomy and Physiology of the Right Ventricle**
김아영 / 연세의대13:05 - 13:20 **Mechanisms of Right Heart Failure in CHD**
조화진 / 전남의대13:20 - 13:35 **Echocardiographic Assessment of the Right Ventricle**
윤신원 / 중앙의대13:35 - 13:50 **Magnetic Resonance Assessment of RV Remodeling and Function**
이철 / 서울의대13:50 - 14:05 **Right Ventricular Function in Ebstein's Malformation**
차슬기 / 울산의대14:05 - 14:20 **Discussion****Education Workshop 3: Echocardiography** Channel 6**Applying Updated Guidelines to Clinical Practice: Case-based Approach****Chairperson(s)** 김기식, 박태호**Panel** 조동혁, 허란12:50 - 13:05 **Aortic Valve Disease**
서지원 / 연세의대13:05 - 13:20 **Mitral Valve Disease**
김은경 / 성균관의대13:20 - 13:35 **Prosthetic Valves and Anticoagulation**
조익성 / 연세의대13:35 - 13:50 **Tricuspid Valve and Mixed Valve Disease**
박준빈 / 서울의대13:50 - 14:05 **Hypertrophic Cardiomyopathy**
손장원 / 영남의대14:05 - 14:20 **Discussion** 14:30 - 16:00**Intervention 3** Channel 1**Which Is the Winner for Long-term Management of Patients Undergoing Complex PCI?****Chairperson(s)** 차광수, 장기욱**Panel** 박용휘, 조정래14:30 - 14:50 **I Prefer Aspirin for Long-term Management of Patients at Any Risks**
심두선 / 전남의대14:50 - 15:10 **HOST-EXAM Clarified the Benefit of Clopidogrel Monotherapy Even in Patients at High Risk**
한정규 / 서울의대15:10 - 15:30 **DAPT Is the Only Reliable Regimen for Patients at High Risk**
최기홍 / 성균관의대15:30 - 15:50 **DAPT with Low Dose NOAC Is the Promising Option for Patients at High Risk**
홍성진 / 연세의대15:50 - 16:00 **Discussion**

Heart Failure 2

Channel 2

Essence of Recent HF Trials

Chairperson(s) 유규형, 최동주
Panel 김응주, 양동현

14:30 - 14:42	PARADISE-MI 조익성 / 연세의대
14:42 - 14:48	Critique 박성미 / 고려의대
14:48 - 15:00	Discussion
15:00 - 15:12	EMPEROR-Preserved 윤종찬 / 가톨릭의대
15:12 - 15:18	Critique 조현재 / 서울의대
15:18 - 15:30	Discussion
15:30 - 15:42	Redefining β-blocker Response in Heart Failure Patients with Sinus Rhythm and Atrial Fibrillation: A Machine Learning Cluster Analysis 이선기 / 한림의대
15:42 - 15:48	Critique 심지영 / 연세의대
15:48 - 16:00	Discussion

Basic Research Hot Session 1

Channel 3

Chairperson(s) 김효수, 한진
Panel 김인준, 김종필

14:30 - 14:50	Dual Approach & Combination Cell Therapy for Cardiac Repair 박훈준 / 가톨릭의대
14:50 - 15:10	Regulators in Cardiogenesis and Cardiovascular Function 강중순 / 성균관대의대
15:10 - 15:30	Bioprinting Technology Towards Cardiovascular Tissue Modeling 장진아 / POSTECH
15:30 - 15:50	Comprehensive Quantification of Fuel Use by the Failing and Nonfailing Human Heart Cholsoon Jang / Univ. of California, USA
15:50 - 16:00	Discussion

Hypertension

Channel 4

고혈압과 여성

Chairperson(s) 홍경순, 임상현
Panel 김학령, 박상민

14:30 - 14:45	여성고혈압의 역할 김현창 / 연세의대
14:45 - 15:00	임신과 고혈압: 기전과 진단 김미나 / 고려의대
15:00 - 15:15	임신과 고혈압: 치료 및 분만 후 관리 조정선 / 가톨릭의대
15:15 - 15:30	폐경 후 여성의 고혈압 관리 이병권 / 연세의대
15:30 - 15:45	여성은 남성과 다른 진료지침이 필요한가? 신진호 / 한양의대
15:45 - 16:00	Discussion

Pediatric Cardiology 2

Channel 5

Right Heart Failure in Congenital Heart Disease 2

Chairperson(s) 김웅한, 허준
Panel 광재건, 김지나

14:30 - 14:45	Single Right Ventricular Function and Failure in the Fontan Circulation 김수진 / 부천세종병원
14:45 - 15:00	Medical Therapy for Chronic Right Ventricular Failure in Congenital Heart Disease 정수인 / 아주의대
15:00 - 15:15	Transcatheter Pulmonary Valve Replacement: Impact on Management 장소익 / 부천세종병원
15:15 - 15:30	Surgical Strategy to Preserve RV Function in HLHS 박천수 / 울산의대
15:30 - 15:45	Resynchronization Therapy in CHD Patients with RHF 송미경 / 서울의대
15:45 - 16:00	Discussion

Education Workshop 4: Arrhythmia

Channel 6

Essentials in Atrial Fibrillation Diagnosis and Management

Chairperson(s) 장성원, 박형욱

Panel 백용수, 최원석

- 14:30 - 14:45 **심방세동 진단 및 선별검사**
김성환 / 가톨릭의대
- 14:45 - 15:00 **심방세동 뇌졸중 예방: 항응고치료 및 비약물치료법**
오일영 / 서울의대
- 15:00 - 15:15 **심방세동 맥박수 조절 및 항부정맥약제**
심재민 / 고려의대
- 15:15 - 15:30 **심방세동 비약물 리듬 조절법: 전극도자절제술 및 수술적치료법**
박형섭 / 계명대의대
- 15:30 - 15:45 **심방세동 생활습관 및 위험인자 관리**
김태훈 / 연세의대
- 15:45 - 16:00 **Discussion**



16:10 - 17:40

Intervention 4

Channel 1

CTO Recorded Live Session

Chairperson(s) 박헌식, 김희열

Panel 윤혁준, 이승환

- 16:10 - 16:50 **Retrograde CTO Intervention Case**
김효수 / 서울의대
- 16:50 - 17:30 **Imaging-guided CTO Intervention Case**
김병국 / 연세의대
- 17:30 - 17:40 **Discussion**

Eng *ESC-KSC Joint Session: Arrhythmia

Channel 2

Clinical Updates in Treatment of Atrial Fibrillation

Chairperson(s) Rick Grobbee, Young-Hoon Kim

- 16:10 - 16:30 **Optimal Rhythm Control Strategy in Patients with Atrial Fibrillation**
Boyoung Joung / Yonsei Univ., Korea
- 16:30 - 16:50 **Can We Perform AF Ablation First Line?**
Dipen Shah / Geneva Univ., Switzerland
- 16:50 - 17:10 **Effective & Safe Anticoagulation for SPAF in High Risk Populations**
Eue-Keun Choi / Seoul National Univ., Korea
- 17:10 - 17:30 **Bleeding Risk Evaluation**
Tatjana Potpara / Belgrade Univ., Serbia
- 17:30 - 17:40 **Discussion**

*ESC: European Society of Cardiology

Basic Research Hot Session 2

Channel 3

Chairperson(s) 김원

Panel 김용숙, 민필기

- 16:10 - 16:30 **Identification and Application of Novel GPCR for Heart Repair**
이춘수 / 서울의대
- 16:30 - 16:50 **Dynamic Regulation of Mitochondrial Metabolism in Metabolic Disease**
Haejin Yoon / Harvard Medical School, USA
- 16:50 - 17:10 **KAI1 (CD82) Is a Key Molecule to Control Angiogenesis and Switch Angiogenic Milieu to Quiescent State**
권유옥 / 서울의대
- 17:10 - 17:30 **Gut Microbiome and Cardiovascular Diseases**
천종식 / 서울대학교
- 17:30 - 17:40 **Discussion**

Women Heart Disease

Channel 4

Korean Big Data on Sex Difference in Cardiovascular Disease

Chairperson(s) 김명아, 홍경순

Panel 김학령, 배장호

16:10 - 16:30 **Sex Difference in Acute Myocardial Infarction**
박성미 / 고려의대16:30 - 16:50 **Sex Difference in Atrial Fibrillation**
이소령 / 서울의대16:50 - 17:10 **Sex Difference in Hypertension**
성기철 / 성균관의대17:10 - 17:30 **Sex Difference in Dyslipidemia**
이상학 / 연세의대17:30 - 17:40 **Discussion**

Ethics Workshop [필수교육]

Channel 5

무엇이 아름다운 연구인가?

Chairperson(s) 장양수, 이철환

Panel 강도윤, 추은호

16:10 - 16:40 **윤리의 탄생: 성찰하는 삶, 소크라테스와 만남**
김현 / 서울대학교16:40 - 17:10 **참다운 연구: 위변조, 표절의 예방과 저자윤리**
허선 / 한림의대17:10 - 17:20 **KCJ의 경험: 사례로 알아보는 연구윤리 위반**
편육범 / 이화의대17:20 - 17:40 **Discussion**

Epidemiology

Channel 6

Recent Advances in Cardiovascular Risk Prediction

Chairperson(s) 김영학, 김현창

Panel 신민호, 조인정

16:10 - 16:30 **Potential Role of Biomarkers in Cardiovascular Risk Prediction**
최성훈 / 한림의대16:30 - 16:50 **Coronary Artery Calcium Score for Cardiovascular Risk Prediction**
강정규 / 성균관대의대16:50 - 17:10 **Machine Learning-based Models for Cardiovascular Risk Prediction**
조상영 / 경상대의대17:10 - 17:30 **Lifetime Risk Predictions for Cardiovascular Diseases**
이호규 / 연세의대17:30 - 17:40 **Discussion**

18 Mon.

DAY 3

KSC 2021 Program

1

08:30 - 10:00

Cardiac Pathology

Channel 1

Immunohistochemistry and Molecular Diagnosis of Cardiac Biopsies

Chairperson(s) 서정욱, 이창하
Panel 김기범, 이상한

- 08:30 - 09:00 **Basics of Immunohistochemistry and Molecular Diagnosis and Real World Cases**
고지원 / 서울의대
- 09:00 - 09:20 **Immunohistochemistry in Endomyocardial Biopsy**
김정선 / 성균관대의대
- 09:20 - 09:40 **Immunohistochemistry in Cardiac Research**
서정욱 / 인천세종병원
- 09:40 - 10:00 **Discussion**

Heart Failure 3

Channel 2

Debate: Hot Issues in HF Management

Chairperson(s) 박대균, 신미승
Panel 이선기, 홍석근

- 08:30 - 08:42 **Pro: Early Use of SGLT-2 Inhibitor in HF**
오재원 / 연세의대
- 08:42 - 08:54 **Con: Early Use of SGLT-2 Inhibitor in HF**
이수용 / 부산의대

- 08:54 - 08:59 **Pro Rebuttal**
- 08:59 - 09:04 **Con Rebuttal**
- 09:04 - 09:15 **Discussion**
- 09:15 - 09:27 **Pro: Central ECMO as a BTT**
강지훈 / 서울의대
- 09:27 - 09:39 **Con: Central ECMO as a BTT**
김만석 / 울산의대
- 09:39 - 09:44 **Pro Rebuttal**
- 09:44 - 09:49 **Con Rebuttal**
- 09:49 - 10:00 **Discussion**

Update of Latest Clinical Trial

Channel 3

What's New? Update of Key Clinical Trials 2021

Chairperson(s) 박성욱, 윤정한
Panel 김준홍, 이성윤

- 08:30 - 08:45 **CAD**
양한모 / 서울의대
- 08:45 - 09:00 **심부전**
박진주 / 서울의대
- 09:00 - 09:15 **Metabolic, Lipid**
안효석 / 가톨릭의대
- 09:15 - 09:30 **부정맥**
권창희 / 건국대의대
- 09:30 - 09:45 **Updated Clinical Trials 2021 in Echo and Imaging**
선병주 / 충남의대
- 09:45 - 10:00 **Discussion**

Cardiometabolic Syndrome

Channel 4

Debate Session: Beyond Statin

Chairperson(s) 고광근, 김원
Panel 김신근, 조상호

08:30 - 08:48	Fenofibrate Is Better 허지혜 / 한림의대
08:48 - 09:06	Omega-3 Fatty Acid Is Better 김학령 / 서울의대
09:06 - 09:24	Lipoprotein(a) Targeting Is Better 장영우 / 가천의대
09:24 - 09:42	Colchicine Is Better 김현진 / 한양의대
09:42 - 10:00	Discussion

Smart Health

Channel 6

Cross-talk between Clinicians and Industry

Chairperson(s) 박승우, 김용진
Panel 윤창환, 최종일

08:30 - 08:50	메디컬데이터 미래와 비전 김영학 / 울산의대
08:50 - 09:10	의료정보산업의 현황과 전망 황희 / 서울의대
09:10 - 09:30	디지털 헬스케어 미래 전략 김은정 / KISTEP
09:30 - 09:50	Post COVID 시대의 Healthcare 나군호 / NAVER
09:50 - 10:00	Discussion



10:10 - 11:40

Eng Vascular

Channel 1

Precision Medicine in Vascular Aging and CV Risk

Chairperson(s) Ki Chul Sung, Jin-Ok Jeong
Panel Il Suk Sohn, Chi Young Shim

10:10 - 10:30	Cardiovascular Imaging on the Aorta and CV Risk Joao A C Lima / Johns Hopkins Univ., USA
10:30 - 10:50	Mendelian Randomization and Precision Medicine and in CV Risk Patients Sun Ha Jee / Yonsei Univ., Korea
10:50 - 11:10	Machine Learning for Coronary Artery Disease Si Hyuck Kang / Seoul National Univ., Korea
11:10 - 11:30	Big Data Analysis Experience from Korean CV Cohort Jang-Young Kim / Yonsei Wonju Univ., Korea
11:30 - 11:40	Discussion

Cardiogenic Shock

Channel 2

Management of Cardiogenic Shock according to the Etiology

Chairperson(s) 권현철, 김현중
Panel 안철민, 양정훈

10:10 - 10:30	Cardiogenic Shock Associated with Ischemic Heart Disease 강지훈 / 서울의대
10:30 - 10:50	Cardiogenic Shock Associated with Non-ischemic Origin 오재원 / 연세의대
10:50 - 11:10	Cardiogenic Shock, Combined with Septic Shock 김민석 / 울산의대
11:10 - 11:30	Cardiogenic Shock Associated with Post-cardiotomy Status 정재승 / 고려의대
11:30 - 11:40	Discussion

Guideline Review

Channel 3

How to Apply Guideline in My Practice

Chairperson(s) 안태훈, 한규록

Panel 나득영, 연태진

10:10 - 10:30	How to Apply ESC Guideline of Acute Coronary Syndrome in My Daily Practice 조진만 / 경희의대
10:30 - 10:50	How to Apply the Latest Dyslipidemia Guidelines in Clinical Practice 김병진 / 성균관대의대
10:50 - 11:10	How to Apply 2017 ACC/AHA Hypertension Guideline to Clinical Practice 박성하 / 연세의대
11:10 - 11:30	Evidence-based VTE Management in My Experience 나상훈 / 서울의대
11:30 - 11:40	Discussion

Eng Basic Research

Channel 4

Novel Insight and Mechanism of Heart Failure

Chairperson(s) Youngkeun Ahn, Jin Han

Panel Yong Sook Kim, Hyoung Kyu Kim

10:10 - 10:30	Maintenance of Mitochondrial Health Becomes a Therapy for Heart Failure Ippei Shimizu / Juntendo Univ., Japan
10:30 - 10:50	Comprehensive Quantification of Fuel Use by the Failing and Nonfailing Human Heart Cholsoon Jang / Univ. of California, USA
10:50 - 11:10	SGLT2 Inhibition Modulates NLRP3 Inflammasome Activity via Ketones and Insulin in DM and CVD Yong Ho Lee / Yonsei Univ., Korea
11:10 - 11:30	S-Nitrosylation of Histone Deacetylase 2 as a Mechanism of Diastolic Dysfunction Gwang Hyeon Eom / Chonnam National Univ., Korea
11:30 - 11:40	Discussion

Cardio-Oncology

Channel 6

Cardio-Oncology in New Decade: What Is New and Where to Go

Chairperson(s) 민창기, 박성미

Panel 이윤규, 정우백

10:10 - 10:25	Thromboembolism in Cancer Patients 방수미 / 서울의대
10:25 - 10:40	Arrhythmia Secondary to Cancer Therapy 차명진 / 울산의대
10:40 - 10:55	Radiation Therapy and Carditoxicity 윤홍인 / 연세의대
10:55 - 11:10	Preventive Cardio-Oncology: Paradim Shift 김미나 / 고려의대
11:10 - 11:25	Role of Cardiac Rehabilitation in Cancer Patients 권아미 / 가톨릭의대
11:25 - 11:40	Discussion



11:50 - 12:30

Scientific Session [Bayer]

Channel 1

Patient Protection in Focus: Role of Rivaroxaban in High Risk Vascular Disease Patients

Chairperson(s) 권현철, 채인호

11:50 - 12:10	Clinical Benefits of Rivaroxaban in Patients with AF and Vascular Disease 백용수 / 인하의대
12:10 - 12:30	What Is Optimal Anti-thrombotic Treatment Strategy in Poly-vascular Patients? 천민구 / 부산의대

DAY

3

Scientific Session [Celltrion Pharm/Dong-A ST]

Channel 2

BP Control Strategies for Preventing Cardiovascular Disease

Chairperson(s) 정해역, 임상현

11:50 - 12:10 Importance of 24h BP Control for Reducing CVD Risk
윤종찬 / 가톨릭의대12:10 - 12:30 BP Control Strategy in Patients with Hypertension Complications
이찬주 / 연세의대

Scientific Session [Daiichisankyo/Daewoong]

Channel 3

Update on Diagnosis and Treatment of AF in Clinical Practice

Chairperson(s) 최기준, 박희남

11:50 - 12:10 Screening for Atrial Fibrillation with Wearable Device
최익근 / 서울의대12:10 - 12:30 Safety and Effectiveness of Edoxaban in a Real-World Clinical Setting: Focus on ETNA AF Study
최종일 / 고려의대

12:50 - 14:20

Intervention 5

Channel 1

Current Treatment – Aorta & Peripheral Artery Disease

Chairperson(s) 채인호, 나승운

Panel 강응철, 이재환

12:50 - 13:10 Optimal Timing for Intervention in Aortic Dissection
윤창환 / 서울의대13:10 - 13:30 2020 NICE Guidelines for AAA Repair: An Essential
박택규 / 성균관의대13:30 - 13:50 Postintervention Antithrombotic Therapy–DAPT, Rivaroxaban
안철민 / 연세의대13:50 - 14:10 Current and Future BTK Stent Technology and Novel Scaffolds
김태훈 / 차의대

14:10 - 14:20 Discussion

Arrhythmia 5

Channel 2

SCD

Chairperson(s) 오동진, 조용근

Panel 김대혁, 윤남식

12:50 - 13:05 Primary Prevention in Patients with Heart Failure with Recovered Ejection Fraction
박예민 / 가천의대13:05 - 13:20 Primary Prevention in Patients with Nonischemic Cardiomyopathy
곽혜빈 / 성균관의대13:20 - 13:35 Current Status of Therapeutic Hypothermia
윤준성 / 가톨릭의대13:35 - 13:50 SCD in Athletes
이광노 / 아주의대13:50 - 14:05 What to Do Other than Conventional VT Ablation?: Bipolar and Ethanol
김민 / 충북의대

14:05 - 14:20 Discussion

Healthcare Policy

Channel 3

심혈관질환의 관리 개선

Chairperson(s) 황진용, 김용진

Panel 강시혁, 강현재, 김민철, 심지영

12:50 - 13:05 국내 심혈관질환과 심혈관질환 국가 관리 체계의 현황
이학승 / 서울의대13:05 - 13:20 심뇌병 등 법규의 현황과 개선제안
정중화 / 조선의대13:20 - 13:35 지역사회 응급대응 및 치료역량 강화: 현황과 개선방안
배장환 / 충북의대13:35 - 13:50 심장내과전문의의 Burn-Out
왕주미 / 심장학연구재단 미래정책연구소

13:50 - 14:20 Discussion

Echocardiography 5

Channel 4

Echocardiography in Critical Care Medicine

Chairperson(s) 송재관, 홍경순

Panel 강지훈, 최홍미

- 12:50 - 13:07 **Common "ICU" Disease Found by Echocardiography**
김혜미 / 중앙의대
- 13:07 - 13:25 **Monitoring ECMO and LVAD using Echocardiography**
김경희 / 인천세종병원
- 13:25 - 13:42 **Right Ventricular Dysfunction in ICU Patients**
김인철 / 계명의대
- 13:42 - 14:00 **Echocardiography of Post-MI Patients in ICU**
조재영 / 전남의대
- 14:00 - 14:20 **Discussion**

Eng Geriatric Cardiology

Channel 6

Frailty in Cardiovascular Disease

Chairperson(s) Young Dae Kim, Doo Soo Jeon

Panel Kwang Il Kim, Jin Bae Lee

- 12:50 - 13:10 **Hypertension Management for Frail Older Adult**
Ju-Hee Lee / Chungbuk National Univ., Korea
- 13:10 - 13:30 **Frailty Assessment for TAVI Patient**
Dae Hyun Kim / Beth Israel Deaconess Medical Center, USA
- 13:30 - 13:50 **Anticoagulation Therapy for Frail Older Patient with Atrial Fibrillation**
Pil-Sung Yang / Cha Univ., Korea
- 13:50 - 14:10 **Comprehensive Geriatric Assessment and Management for Frail Patients with Heart Failure**
Mi Jeong Kim / Catholic Univ., Korea
- 14:10 - 14:20 **Discussion**



14:30 - 16:00

Intervention 6

Channel 1

Technical Pearls for Complex TAVR Procedures: Case-based Learning

Chairperson(s) 박승정, 채인호

Panel 박덕우, 최승혁

- 14:30 - 14:50 **TAVR for Bicuspid Valve: What We Should Be Concerned and How to Do?**
안정민 / 울산의대
- 14:50 - 15:10 **TAVR for Low Coronary Height and Small Sinus: What We Should Be Concerned and How to Do?**
고영국 / 연세의대
- 15:10 - 15:30 **TAVR for Non-transfemoral Approach**
장기욱 / 가톨릭의대
- 15:30 - 15:50 **TAVR for Valve-In-Valve: What We Should Be Concerned and How to Do?**
유철웅 / 고려의대
- 15:50 - 16:00 **Discussion**

Arrhythmia 6

Channel 2

CIED

Chairperson(s) 신동구, 김대혁

Panel 이기홍, 진은선

- 14:30 - 14:45 **Current Status of Leadless Cardiac Pacing**
유희태 / 연세의대
- 14:45 - 15:00 **Conduction System Pacing for the HF Patient**
최원석 / 부천세종병원
- 15:00 - 15:15 **CIED in HCM Patients**
고점석 / 원광의대
- 15:15 - 15:30 **Interventional CRT Approach**
오일영 / 서울의대
- 15:30 - 15:45 **Implantable Loop Recorder in Clinical Practice**
박종성 / 동아의대
- 15:45 - 16:00 **Discussion**

DAY

3

Insurance Issues

Channel 3

심혈관계 분야 보험관련 현안 및 전략

Chairperson(s) 이진용, 김병욱
Panel 김진배, 배장환

- 14:30 - 14:45 **Wearable ECG의 보험 수가 책정의 문제점**
노승영 / 고려의대
- 14:45 - 15:00 **심장내 장치를 이용한 원격 monitoring을 통한 환자 관리에 대한 보험 인정 범위와 수가**
박상원 / 부천세종병원
- 15:00 - 15:15 **Discussion**
- 15:15 - 15:30 **신포괄수가제, 개관과 운영**
김선우 / 대한의사협회
- 15:30 - 15:45 **신포괄수가제, 현실적인 문제와 해결점**
박찬석 / 가톨릭의대
- 15:45 - 16:00 **Discussion**

Echocardiography 6

Channel 4

How I Learned from My Counterpart

Chairperson(s) 주승재, 신준한
Panel 선병주, 윤연이

- 14:30 - 14:47 **CMR for EchoCG, EchoCG for CMR**
김은경 / 성균관의대
- 14:47 - 15:05 **EchoCG for CMR**
김성목 / 성균관의대
- 15:05 - 15:22 **Nuclear Imaging for EchoCG, EchoCG for Nuclear Imaging**
박준빈 / 서울의대
- 15:22 - 15:40 **EchoCG for Nuclear Imaging**
팽진철 / 서울의대
- 15:40 - 16:00 **Discussion**

Nurse-Technician Session

Channel 6

Coronary Report Form

Chairperson(s) 박은심, 강준원
Panel 김태우, 이종균

- 14:30 - 14:45 **Report of Coronary Angiography**
김소영 / 신촌세브란스병원
- 14:45 - 15:00 **Nursing Report in Angiography**
김선배 / 서울아산병원
- 15:00 - 15:15 **Report of Bifurcation Stenting Techniques**
이규성 / 대전을지대병원
- 15:15 - 15:30 **Knowing the Contrast Agents Used in Cardiovascular Interventions**
김태연 / 고대안암병원
- 15:30 - 15:45 **Prevention & Management of Side Effects Induced by Contrast Media**
소민아 / 강북삼성병원
- 15:45 - 16:00 **Discussion**



Timely Protection of Acute MI

High sensitive Troponin T



Test early

- Troponin 검사는 NSTEMI-ACS로 의심되는 모든 환자에게 필수 검사¹
- 매 10분 치료 지연 시 3.3%씩 추가 사망률 증가²
- 18.7% vs 8.4% NSTEMI vs STEMI 퇴원 후 1년 사망률³



Treat right

- 임상적 증상과 ECG를 보완하여, Troponin 농도의 증가/감소를 통해 급성심근경색 진단¹
- hsTnT 1h algorithm 을 통해 NSTEMI 의심 환자의 재검 간격을 1시간으로 단축¹
- 로슈 hsTnT는 표준화된 결과값 제공으로 보다 신속 정확한 AMI 진단에 도움^{1,4-6}



Save lives

- 1시간 이내에 약 80%의 환자 AMI Rule in / Rule out 가능¹
- 90분 이내 치료 시작 시 원내 사망 위험 43% 감소²
- 응급실 재원 기간을 약 40% 단축하여 응급실 혼잡도 개선 및 환자의 대기 시간 감소⁷⁻⁹

References

1. Roffi M, et al. Eur Heart J. 2016; 37: 267-315
2. Scholz KH, et al. Eur Heart J. 2016;39:1065-74
3. McManus DD, et al. Am J Med. 2011;124:40-7
4. Hildebrandt K, et al. Scand J Clin Lab Invest Suppl. 1999;230:128-31
5. Scholz KH, et al. Eur Heart J. 2016;39:1065-74
6. McManus DD, et al. Am J Med. 2011;124:40-7.
7. Reichlin T, et al. Am J Med. 2012;125:1205-1213.e1.
8. Crowder KR, et al. Am J Emerg Med. 2015;33:1790-4.
9. Stoyanov KM, et al. Eur Heart J Acute Cardiovasc Care. 2019;12:2048872619861911.

MC-KR-00525

소중한 환자의 건강한 혈관을 위해
프레탈이 걸어온 길, 프레탈이 걸어갈 길.

Efficacy Safety and Trust The 1st & Original Cilostazol PLETAAL

PLETAAL

한국오츠카제약

NEW

심박수 조절
Premium Statin 복합제

NEBIROSTA[®]

Vasodilating BB, NEBIVOLOL
Potent Lipid lowering agent, ROSUVASTATIN

Super Combi 1일 1회

- 만성심부전
- 원발성 고콜레스테롤혈증
- 심혈관질환(뇌졸중, 심근경색, PTCA)

Nebivolol / Rosuvastatin

- 1.25/5mg 2.5/5mg
- 2.5/10mg
- 5/10mg 5/20mg
- 복합형 고콜레스테롤혈증
- 고혈압

ELYSON
에리슨제약(주)

KPP
(주)경풍약품



FAST AND EASY WIRELESS PHYSIOLOGY AT STRESS OR REST
QUANTIEN[™]
Measurement System



OPTIS MOBILE
With MLD MAX OCT ALGORITHM

KR-CP045-EN-11/20-BSA



한림제약주식회사

로디엔정 2.5mg과 라세믹암로디핀 5mg의
혈압강하효과는 동일합니다.



[특징] 에스암로디핀으로서 125mg, 25mg, 5mg **[성상]** 흰색의 오각형 정제 **[효능효과]** 1. 고혈압, 관상동맥의 고정폐색(안정형심증) 또는 관상동맥의 혈관경련수축(이형형심증)에 의한 심근성허혈증 2. 최근 혈관조영술로 관상동맥심장질환이 확인된 환자로서 심부전이 없거나 심박출률이 40% 미만인 환자의 협심증으로 인한 입원의 위험성 감소 혹은 관상동맥 혈관재술에 대한 위험성 감소 **[용법용량]** 성인에스암로디핀으로서 1일 1회 25mg을 경구투여하며 환자의 반응에 따라 1일 최대 5mg까지 증량할 수 있다. 증상에 따라 적절히 증감한다. 소아(만 6-17세): 효과적인혈압강하를위한 에스암로디핀의경구투여용량은 1일 1회 125mg-25mg이다. 소아 환자에서 1일 25mg을 초과하는 용량은 연구되지 않았다. **[금지]** 1. 이 약이나 이 약의 구성 성분 또는 다른 디하이드로피리딘계 약물에 과민반응의 병력이 있는 환자 2. 임부 또는 임신하고 있을 가능성이 있는 여성 및 수유부 3. 소크 환자(심장성소크 포함) 4. 중증의 대동맥관협착증 환자 5. 불안정형심증 환자 6. 심근경색 발생 후 1개월 이내인 환자 7. 중증의 간기능장애 환자 8. 중증의 저혈압 환자 **[신중투여]** 1. 중증의 신기능장애환자(투석을 해야 하는 신부전 환자 포함) 2. 고령자 3. 급성 심부전 환자 4. 고혈압위기 환자 5. 경증 ~ 중증도의 간기능장애 환자 **[저장방법]** 기밀용기, 실온(4-30°C)보관 **[사용기한]** 제조일로부터 36개월 **[포장정보]** 125mg, 30T, 300T/BTL, 25mg, 5mg, 30T/PTP, 300T/BTL.

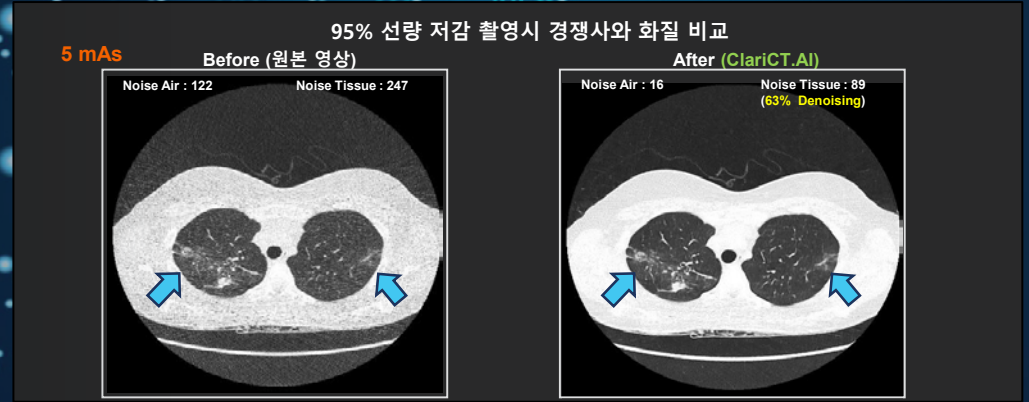
로디엔 정
S-amlodipine nicotinate 1.25mg, 2.5mg, 5mg



ClariCT.AI

Clari AI MEDICAL IMAGING SOLUTIONS

세계 최초 초저선량 CT 영상 인공지능 잡음제거 솔루션



- 혁신적인 잡음제거로 고품질 영상 제공
- 초저선량 촬영에서 뛰어난 잡음 제거
- CT 튜브 수명 연장 및 유지보수비 절감
- DICOM 표준, 어떤 CT 장비와도 호환

(주)클라리피 T. 02-741-3014 E. claripi@claripi.com H. www.claripi.com

한국유니팜 UNIPHARM KOREA 제뉴파마

Kallerse tab.

First-Line

Treatment for Peripheral Circulatory Failure

말초혈액순환개선제

칼리제 정

(칼리디노게나제)

[Kallidinogenase 50 I.U.]

인국약품(주)



New LEVOTENSION 2.5mg, 5mg
Strong Efficacy
Proven Safety

S-Amlodipine Besylate 2.5mg, 5mg

- ✓ 5mg으로 더욱 강력해진 혈압강하효과
- ✓ 약물 수용체 선택적 반응
- ✓ 부종 개선율(98.7%), 낮은 부작용 발현율(1.6%)
- ✓ 약동학적 상호 작용 감소



1st Chiral S-Amlodipine
레보텐션
S-Amlodipine Besylate 2.5mg, 5mg



대한심장학회 제65차 추계학술대회

The 65th Annual Scientific Meeting of The Korean Society of Cardiology

발행 | 2021년 10월 14일 발행

주최 | 대한심장학회

주관 | 대한심장학회 & 심장학연구재단

발행처 | 대한심장학회

서울시 마포구 마포대로 109 롯데캐슬프리지던트 101동 1704호

Tel. 02-3275-5258 Fax. 02-3275-5259

E-mail. herz1@circulation.or.kr

기획·제작 | 줄릭파마솔루션즈서비스코리아

서울시 용산구 한강대로 92 엘에스용산타워 3층

Tel. 02-2006-0831 Fax. 02-2006-0650-1

E-mail. jsmin@zueiligpharma.com